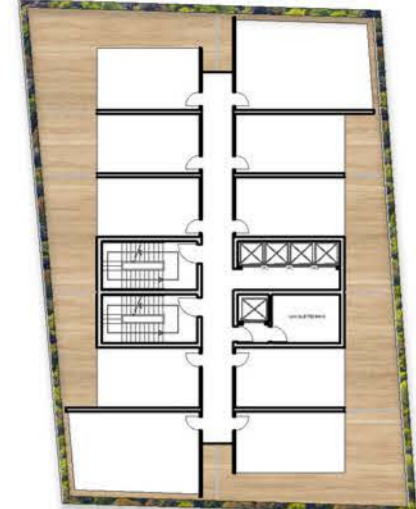
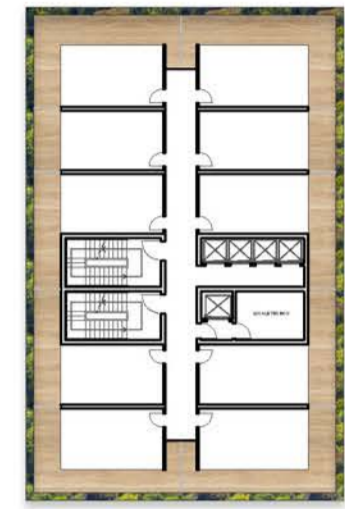


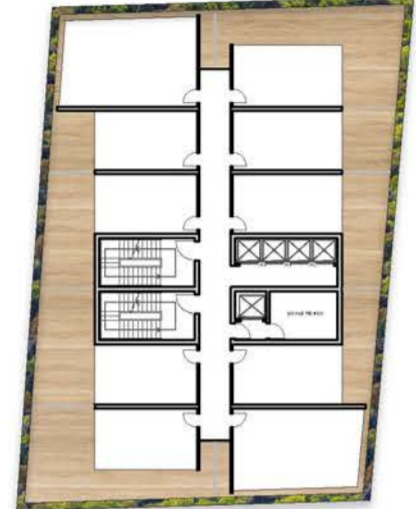
LIVELLO 4 - quota + 15.75



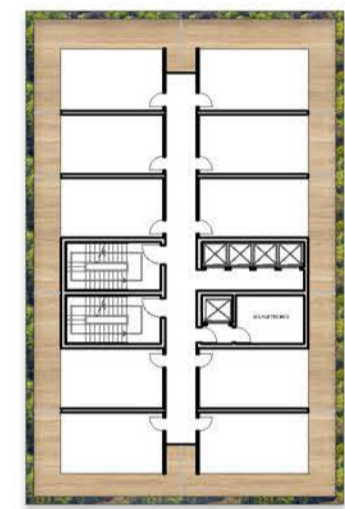
LIVELLO 5 - quota + 19.35



LIVELLO 6 - quota + 22.95



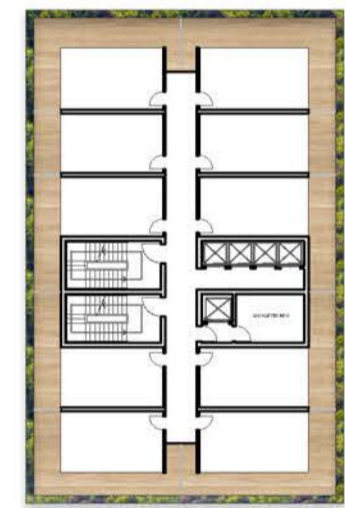
LIVELLO 7 - quota + 26.55



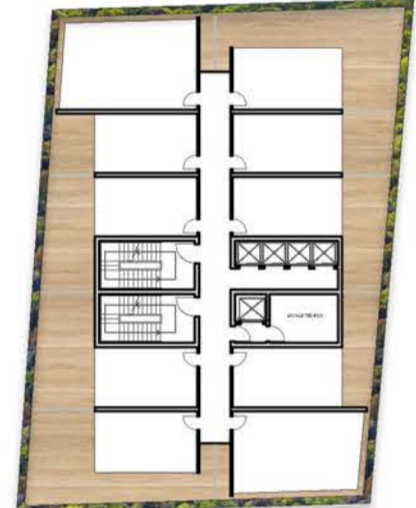
LIVELLO 8 - quota + 30.15



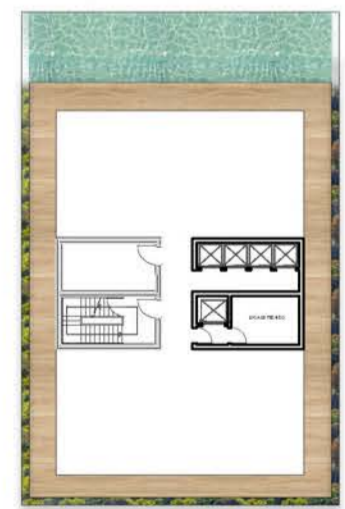
LIVELLO 9 - quota + 33.75



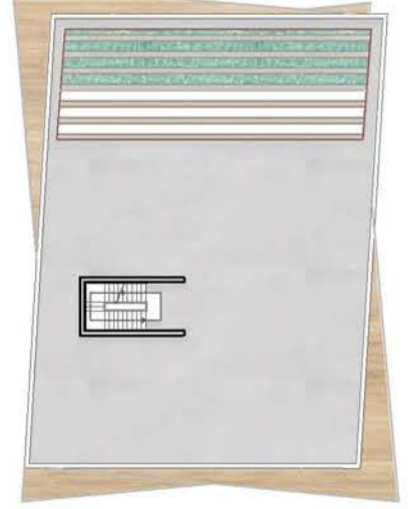
LIVELLO 10 - quota + 37.35



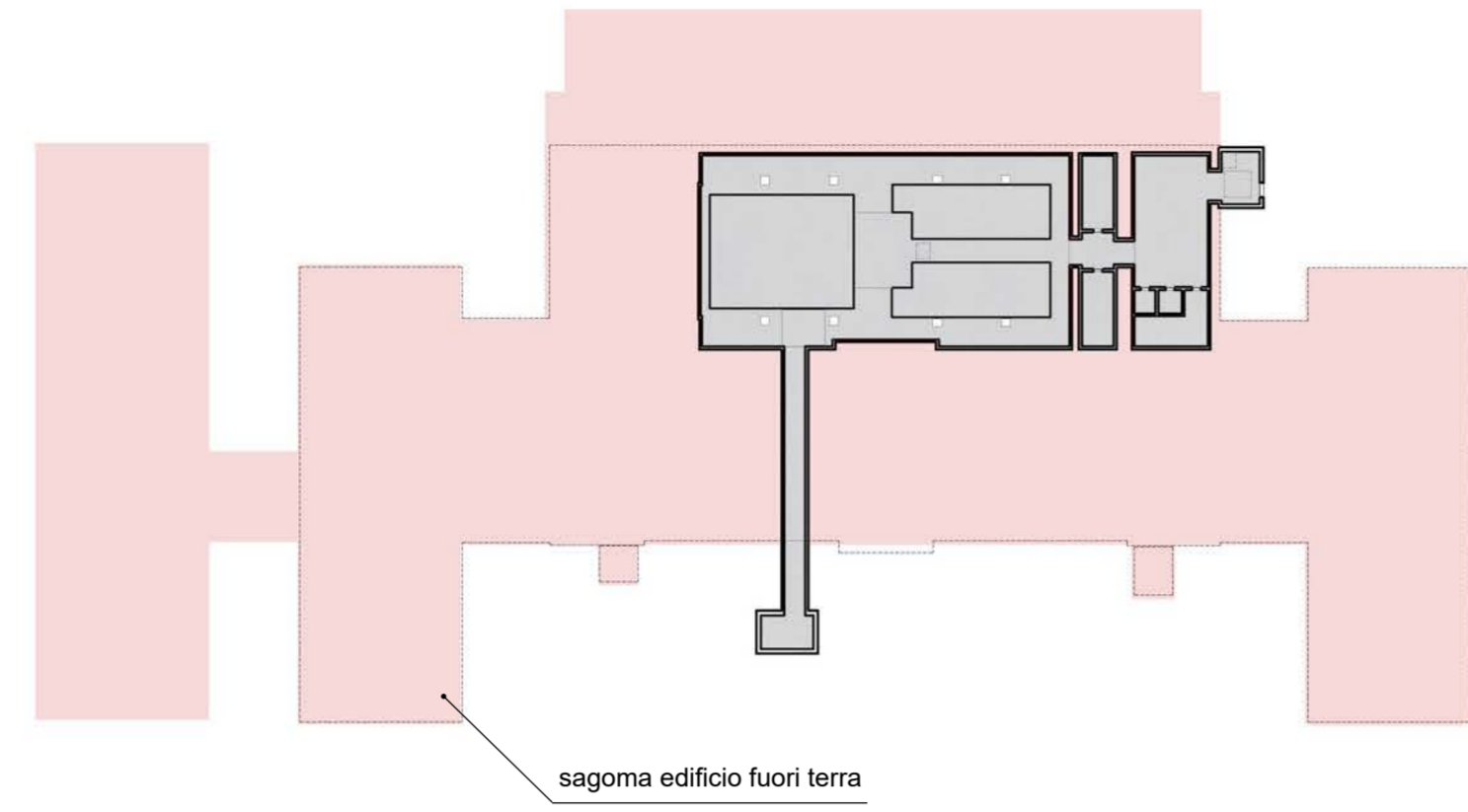
LIVELLO 11 - quota + 40.95



LIVELLO 12 - quota + 44.55



LIVELLO 13 - quota + 48.50



sagoma edificio fuori terra



sagoma edificio fuori terra

PLANIMETRIA PIANI INTERRATI
SCALA 1:500



INSERIMENTO PROGETTO

PLANIMETRIE LIVELLI HOTEL
SCALA 1:500

COMUNE DI RICCIONE
ACCORDO OPERATIVO ai sensi dell'Art. 4, LR n. 24/2017
"RICCIONE TERME"



Proponente
RICCIONE TERME SPA
Viale Torino 4/16
47838 Riccione (RN)



Progettazione Architettonica e Coordinamento Generale
Ing. Alberto Casalbani - Polistudio AES
Arch. Gianluca Corvina - Polistudio AES
Arch. Silvia Pulcinelli - Polistudio AES

Progettazione Impiantistica
Ing. Andrea Amaducci - Polistudio AES
Per. Ind. Laur. Matteo Guidi - Polistudio AES
Ing. Alberto Frisoni - Polistudio AES

Progetto del Paesaggio
Landesign

Relazione Geologica e Analisi Geotecnica
SGAI srl

Consulenza Ambientale
Dott. Geol. Daniela Tonini

Indagine Archeologica preventiva
AdArte srl

Aspetti economici e finanziari
BENE SAS

Rilievo topografico planoaltimetrico
GEOTRE

Oggetto

Planimetrie livelli hotel
e parcheggio interrato

Scala Elab. :
1:500

Codifica Elaborato
PA - 2.1.05-00
C.C.: 21-0148

Data:
Novembre 2021